

# DOUBLE STOREYED 3BHK BUNGALOW WITH OFFICE

KEY PLAN:



**BUILT - UP AREA = 370 SQ.M**

## i) Ground Floor

**Living Room = 11.17m x 4.56m**

**Office Room = 4.36m x 3.58m**

**Servant room = 2.95m x 2.35m**  
(Bath= 2.92m x 1.43m)

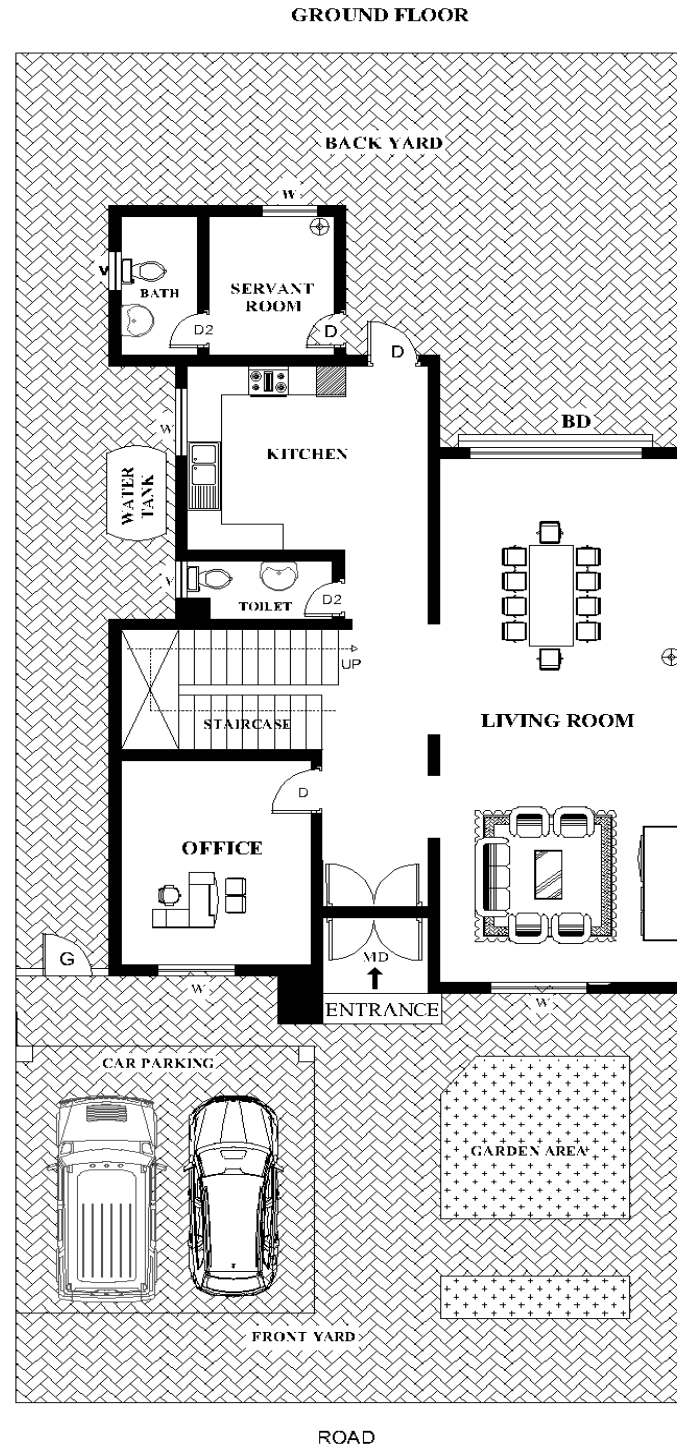
**Kitchen = 3.93m x 4.54m**

**Guest Toilet = 1.23m x 2.74m**

**Car parking = 5.370m x 4.55m**

**Backyard : 107.12 SQ.M**  
(Extended to gate)

**Frontyard = 109.68 SQ.M**  
(From gate to road including car parking, front garden)



**ii) First Floor**

**FIRST FLOOR**

**Master Bedroom = 5.31m x 4.56m**  
(Bath= 2.57m x 1.95m)

**Bedroom 1 = 4.36m x 4.56m**  
(Common Bath = 1.55m x 1.96m)

**Children Bedroom = 4.976m x 4.56m**

Balcony = 22.590 SQ.M

